

DESCRIPTION

The Tradesman snaplock pipe is used for low pressure applications. All union made pipes will include a yellow sheet metal union made label on each bundle.

STANDARD CONSTRUCTION

Manufactured from 30GA ASTM A-653 and ASTM A-924 G60 material.
60" length.

FEATURES

Meets SMACNA RL-8 Longitudinal Seam
(pg. 3-5, figure 3-2; 2005 3rd Edition)
Reeves lock and button lock come standard on every piece.
Pressure rating (-1" to +2" water gauge)

GUARANTEE

All Tradesman Manufacturing products are guaranteed against defective material.

OPTIONAL CONSTRUCTION

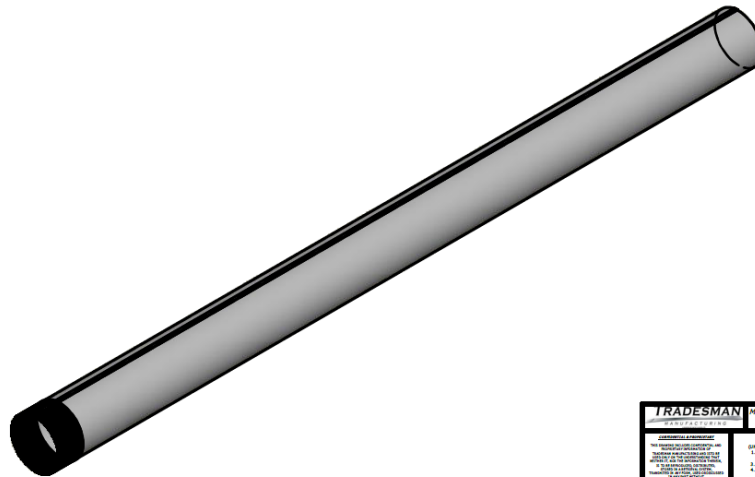
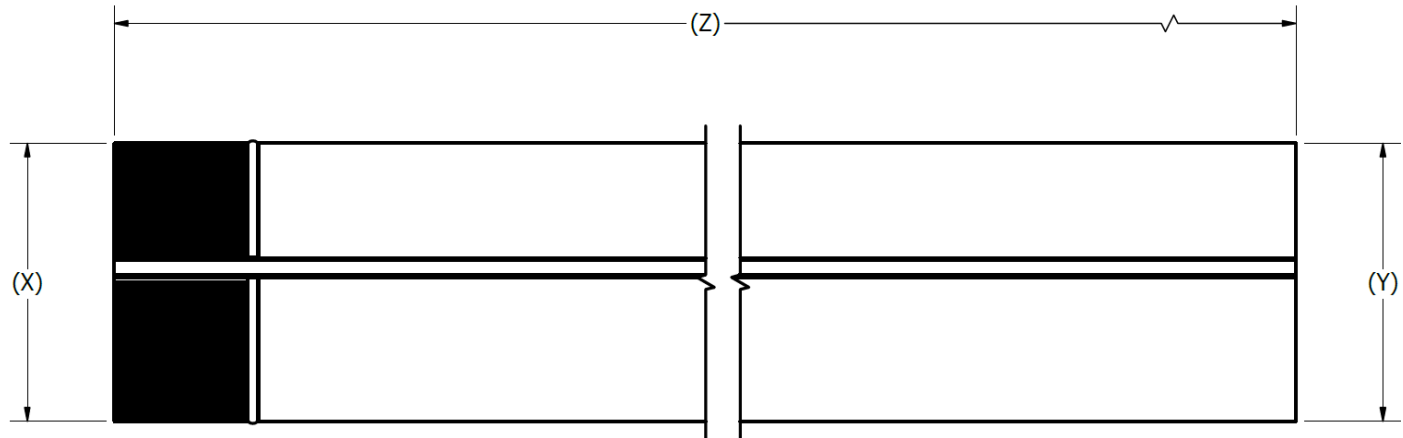
30GA, 28GA, 26GA and 24GA galvanized
G90 galvanized
48", 36", and 24" lengths
Aluminum



SNAPLOCK PIPE

Product Code	X (in)	Y (in)	Z (in)	Bndl/Skid Qty (60")
SLP/0360/26YL	3" Small End	3" Big End	60	50'/NA
SLP/0460/26YL	4" Small End	4" Big End	60	50'/3200
SLP/0560/26YL	5" Small End	5" Big End	60	50'/1950
SLP/0660/26YL	6" Small End	6" Big End	60	50'/1500
SLP/0760/26YL	7" Small End	7" Big End	60	50'/1250
SLP/0860/26YL	8" Small End	8" Big End	60	50'/900
SLP/0960/26YL	9" Small End	9" Big End	60	50'/800
SLP/1060/26YL	10" Small End	10" Big End	60	50'/600
SLP/1260/26YL	12" Small End	12" Big End	60	50'/600

SNAPLOCK PIPE



TRADESMAN MANUFACTURING	MATERIAL:	QTY:
<small>TRADESMAN MANUFACTURING 1000 INDUSTRIAL AVENUE MILWAUKEE, WI 53219 TEL: 414-387-1100 WWW.TRADESMANMFG.COM</small>	<small>TRADESMAN 1000 INDUSTRIAL AVENUE MILWAUKEE, WI 53219 TEL: 414-387-1100 WWW.TRADESMANMFG.COM</small>	<small>TRADESMAN 1000 INDUSTRIAL AVENUE MILWAUKEE, WI 53219 TEL: 414-387-1100 WWW.TRADESMANMFG.COM</small>
	TITLE:	SLP SHOP DRAWING
	DWG NO:	SLP SHOP DRAWING
	REV:	

[\(403\) 327-9871](tel:4143279871)

sales@tradesmanmfg.ca

www.tradesmanmfg.ca

Specifications are subject to change without notice or obligation. All Tradesman Manufacturing products are guaranteed against defective material.