



INSTALLATION INSTRUCTIONS:

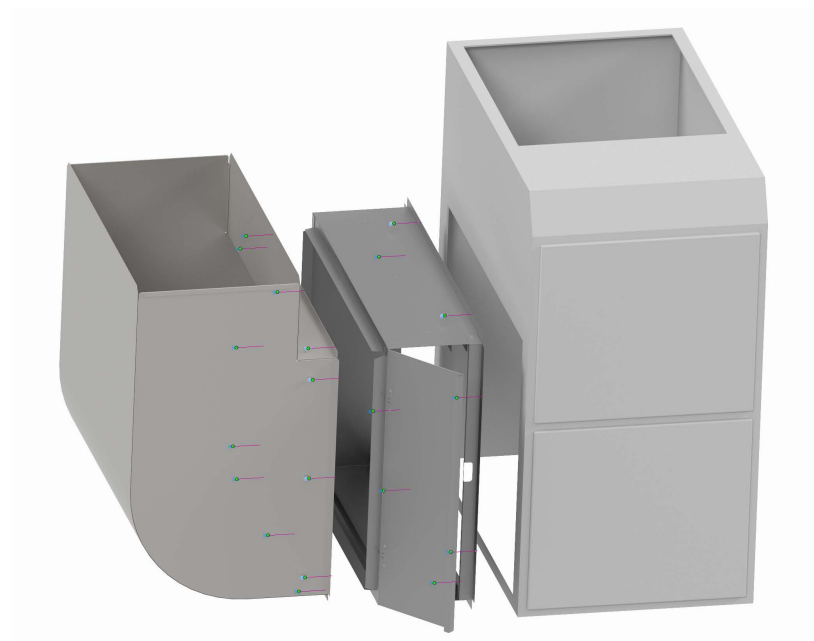
- 1- Choose which side of the furnace to install the filter rack on. Use the rack as a template to mark the cutout then cut.
- 2- Use eight 1/2" sheet metal screws to screw the rack onto the furnace through the holes on each side.
- 3- Use minimum of twelve 1/2" sheet metal screws to screw the air return elbow onto the other side of the filter rack.

NOTE:

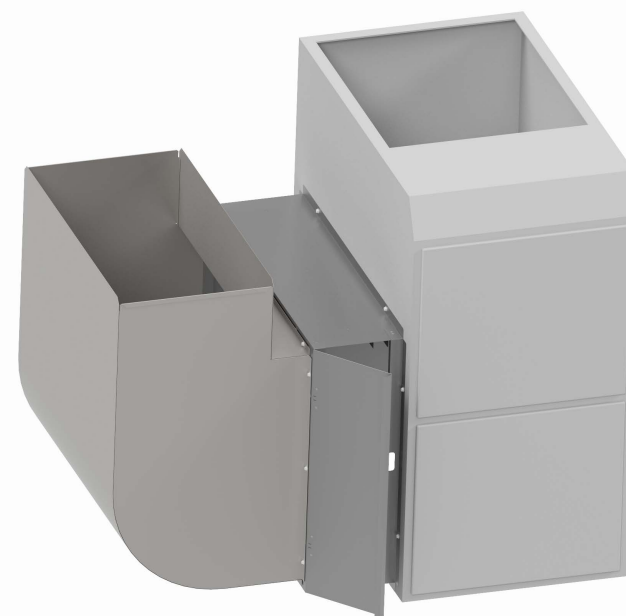
Used for residential applications. When installing the filter make sure to install with the correct air flow direction.

WARNING!!

Improper installation may result in damage to product or inefficiencies in the system. Use proper PPE and equipment during cutting, bending, and installation processes. If local codes differ from these instructions follow local building codes.



INSTALLATION VIEW



INSTALLED VIEW

[\(403\) 327-9871](tel:4033279871)

sales@tradesmanmfg.ca

www.tradesmanmfg.ca

Specifications are subject to change without notice or obligation. All Tradesman Manufacturing products are guaranteed against defective material.