

## DESCRIPTION

Tradesman's Saddle Take Off Press On is designed for low to medium pressure application.

## CONSTRUCTION

Made of 24GA or 26GA galvanized.

Different options are available:

- G - Gasket
- DG - Damper & Gasket
- SDG - Stand off Damper & Gasket

## FEATURES

100% laser cut for accuracy.

Made to fit Tradesman pipe and fittings.

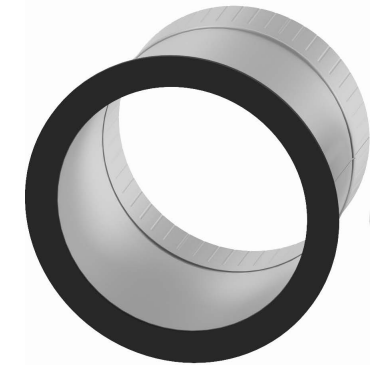
## GUARANTEE

Made in Canada. All Tradesman Manufacturing products are guaranteed against defective material.

Contact Tradesman Manufacturing for availability, pricing, and lead time.

Product Code	A (in)	B (in)	C (in)	Gauge	Carton Qty
SAP/0004G	4"	6"-10"	7"	26	12
SAP/0005G	5"	6"-10"	7"	26	9
SAP/0006G	6"	8"-12"	7"	26	24
SAP/0007G	7"	8"-12"	7"	26	20
SAP/0008G	8"	10"-14"	7"	26	16
SAP/0009G	9"	10"-14"	7"	26	16
SAP/0010G	10"	12"-16"	8"	26	8
SAP/0012G	12"	14"-18"	8"	24	N/A
SAP/0014G	14"	16"-20"	8"	24	N/A
SAP/0016G	16"	18"-22"	8"	24	N/A
SAP/0018G	18"	20"-24"	9"	24	N/A
SAP/0020G	20"	22"-26"	9"	24	N/A

- Gasket



Product Code	A (in)	B (in)	C (in)	Gauge	Carton Qty
SAP/0004DG	4"	6"-10"	7"	26	12
SAP/0005DG	5"	6"-10"	7"	26	9
SAP/0006DG	6"	8"-12"	7"	26	24
SAP/0007DG	7"	8"-12"	7"	26	20
SAP/0008DG	8"	10"-14"	7"	26	16
SAP/0009DG	9"	10"-14"	7"	26	16
SAP/0010DG	10"	12"-16"	8"	26	8
SAP/0012DG	12"	14"-18"	8"	24	N/A
SAP/0014DG	14"	16"-20"	8"	24	N/A
SAP/0016DG	16"	18"-22"	8"	24	N/A
SAP/0018DG	18"	20"-24"	9"	24	N/A
SAP/0020DG	20"	22"-26"	9"	24	N/A

- Gasket
- Damper



[\(403\) 327-9871](tel:(403)327-9871)

[sales@tradesmanmfg.ca](mailto:sales@tradesmanmfg.ca)

Product Code	A (in)	B (in)	C (in)	Gauge	Carton Qty
SAP/0004SDG	4"	6"-10"	7"	26	12
SAP/0005SDG	5"	6"-10"	7"	26	9
SAP/0006SDG	6"	8"-12"	7"	26	24
SAP/0007SDG	7"	8"-12"	7"	26	20
SAP/0008SDG	8"	10"-14"	7"	26	16
SAP/0009SDG	9"	10"-14"	7"	26	16
SAP/0010SDG	10"	12"-16"	8"	26	8
SAP/0012SDG	12"	14"-18"	8"	24	N/A
SAP/0014SDG	14"	16"-20"	8"	24	N/A
SAP/0016SDG	16"	18"-22"	8"	24	N/A
SAP/0018SDG	18"	20"-24"	9"	24	N/A
SAP/0020SDG	20"	22"-26"	9"	24	N/A

- Gasket
- 2" Stand Off Damper



[www.tradesmanmfg.ca](http://www.tradesmanmfg.ca)

