

INSTALLATION INSTRUCTIONS:

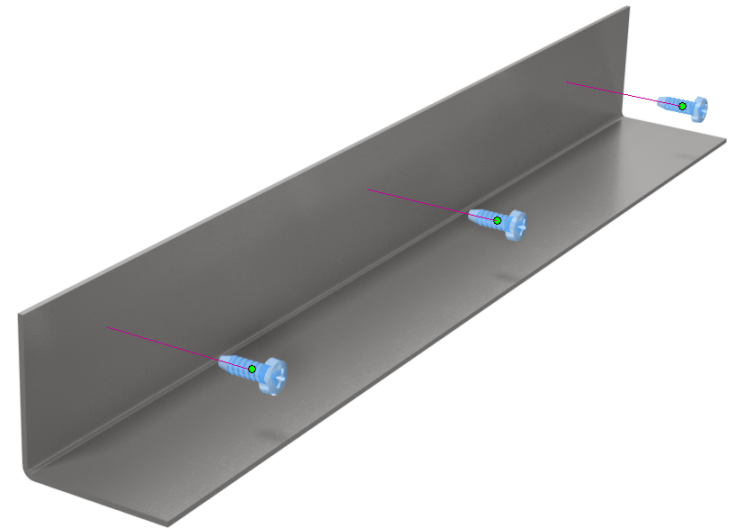
- 1- Cut to desired length with snips, angle grinder, or cut off saw.
- 2- Use a minimum of three 1/2" sheet metal screws to secure, centered on flange.

TIPS:

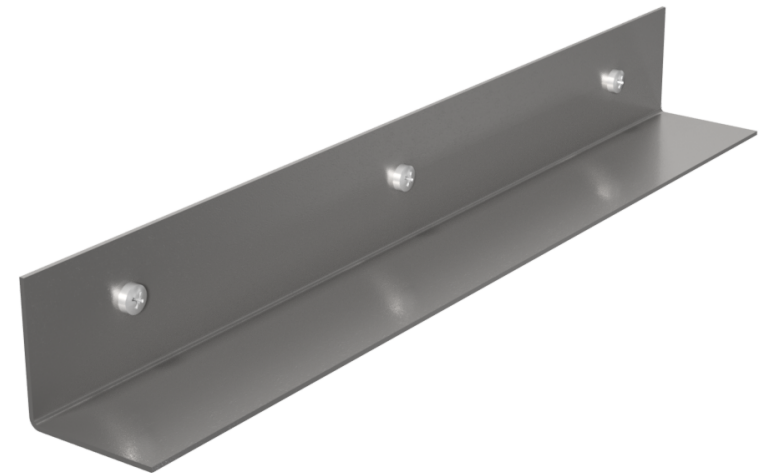
Used for residential and commercial applications. Can be used to reinforce ducting where needed.

WARNING!!

Improper installation may result in damage to product or inefficiencies in the system. Use proper PPE and equipment during cutting, bending, and installation processes. If local codes differ from these instructions follow local building codes.



INSTALLATION VIEW



INSTALLED VIEW