



**DESCRIPTION**

The Tradesman slab duct connecting collar is made to join two pieces of Tradesman slab duct together.

**CONSTRUCTION**

Made of 22GA or 24GA galvanized complete with stamped duct stops so there is always the proper amount of lap for a strong joint.

**FEATURES**

- Stamped duct stops.
- 100% laser cut for accuracy.
- Precut screw holes for quick installation.
- Made to fit Tradesman slab duct.

**GUARANTEE**

Made in Canada. All Tradesman Manufacturing products are guaranteed against defective material.

**OPTIONAL CONSTRUCTION**

Custom sizes available upon request to suit any and all applications.

Contact Tradesman Manufacturing for availability, pricing, and lead time.

Product Code	Size	Box Qty
SCC/1750/22	12" x 1.75" 22GA	50
SCC/1750/24	12" x 1.75" 24GA	50
SCC/2000/22	12" x 2" 22GA	50
SCC/2000/24	12" x 2" 24GA	50

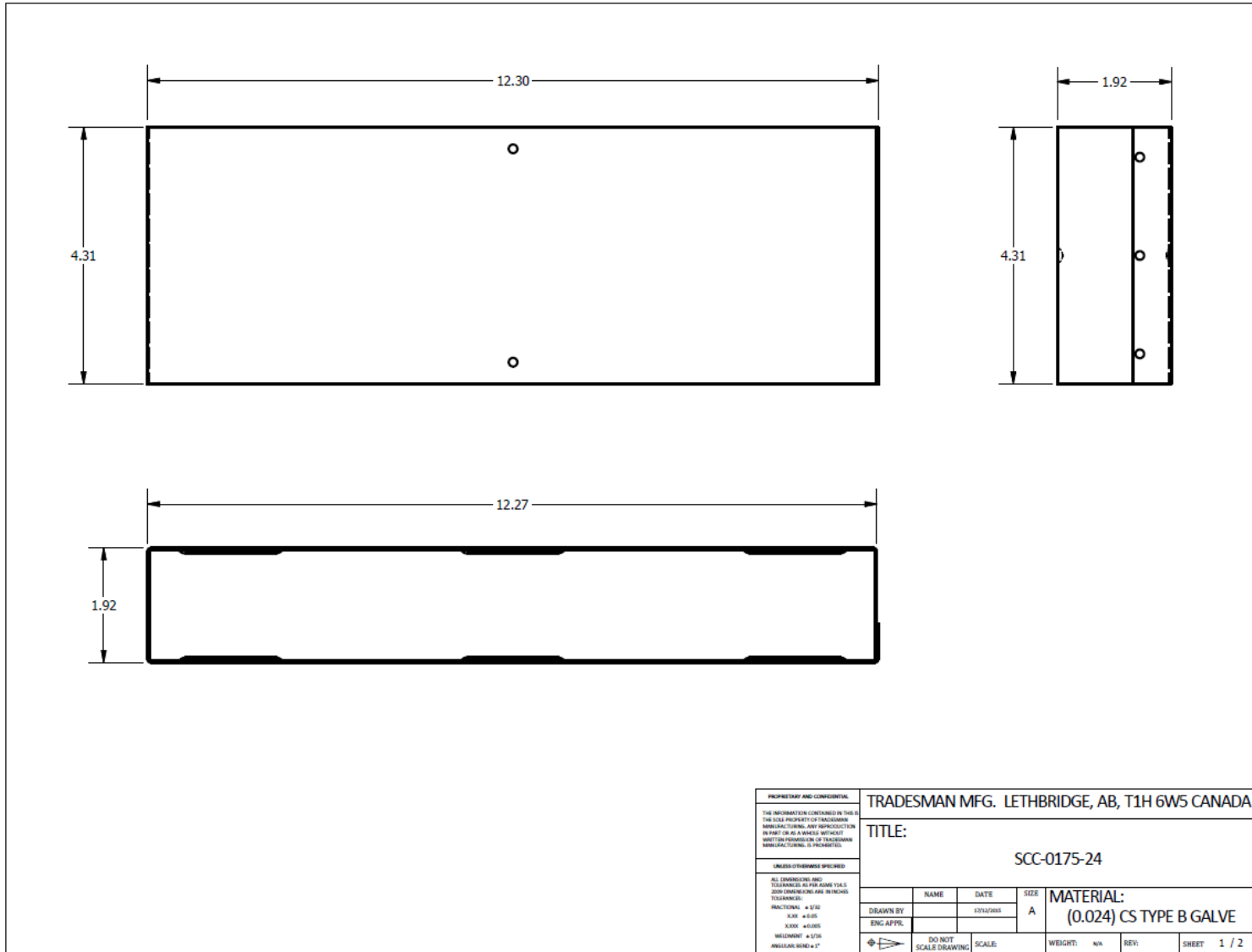


[\(403\) 327-9871](tel:4033279871)

[sales@tradesmanmfg.ca](mailto:sales@tradesmanmfg.ca)

[www.tradesmanmfg.ca](http://www.tradesmanmfg.ca)

Specifications are subject to change without notice or obligation. All Tradesman Manufacturing products are guaranteed against defective material.



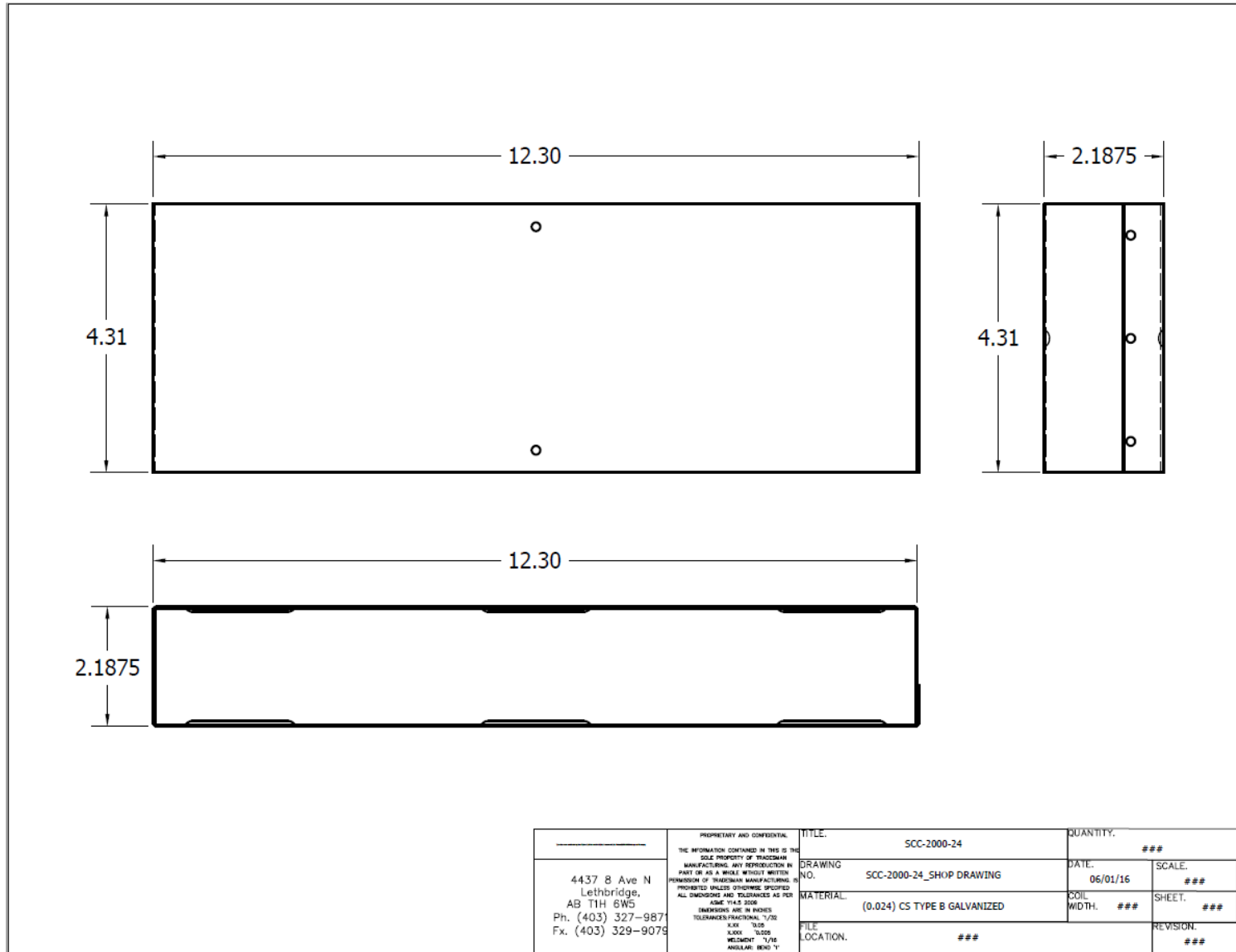
SCC 1750 24

[\(403\) 327-9871](tel:(403)327-9871)

[sales@tradesmanmfg.ca](mailto:sales@tradesmanmfg.ca)

[www.tradesmanmfg.ca](http://www.tradesmanmfg.ca)

Specifications are subject to change without notice or obligation. All Tradesman Manufacturing products are guaranteed against defective material.



SCC 2000 24

[\(403\) 327-9871](tel:(403)327-9871)

[sales@tradesmanmfg.ca](mailto:sales@tradesmanmfg.ca)

[www.tradesmanmfg.ca](http://www.tradesmanmfg.ca)

Specifications are subject to change without notice or obligation. All Tradesman Manufacturing products are guaranteed against defective material.