

DESCRIPTION

The Tradesman slab duct is used to exhaust air from bathroom fans, range hoods, and clothes dryers but can also be used for fresh air intake and supply air.

CONSTRUCTION

Rectangular spiral seamed duct made to be installed in concrete floors of high-rise buildings.

FEATURES

Manufactured in 10' lengths.
 3.5" wide reinforcing channel entire length of duct.
 Can be shipped loose or lifts of 1080' for easy hoisting on site.

GUARANTEE

Made in Canada. All Tradesman Manufacturing products are guaranteed against defective material. All testing performed by Intertek Testing Services NA Ltd. Warnock Hersey and Hardy Associates Ltd. Pressure rating (-1 to +2 water gauge)

OPTIONAL CONSTRUCTION

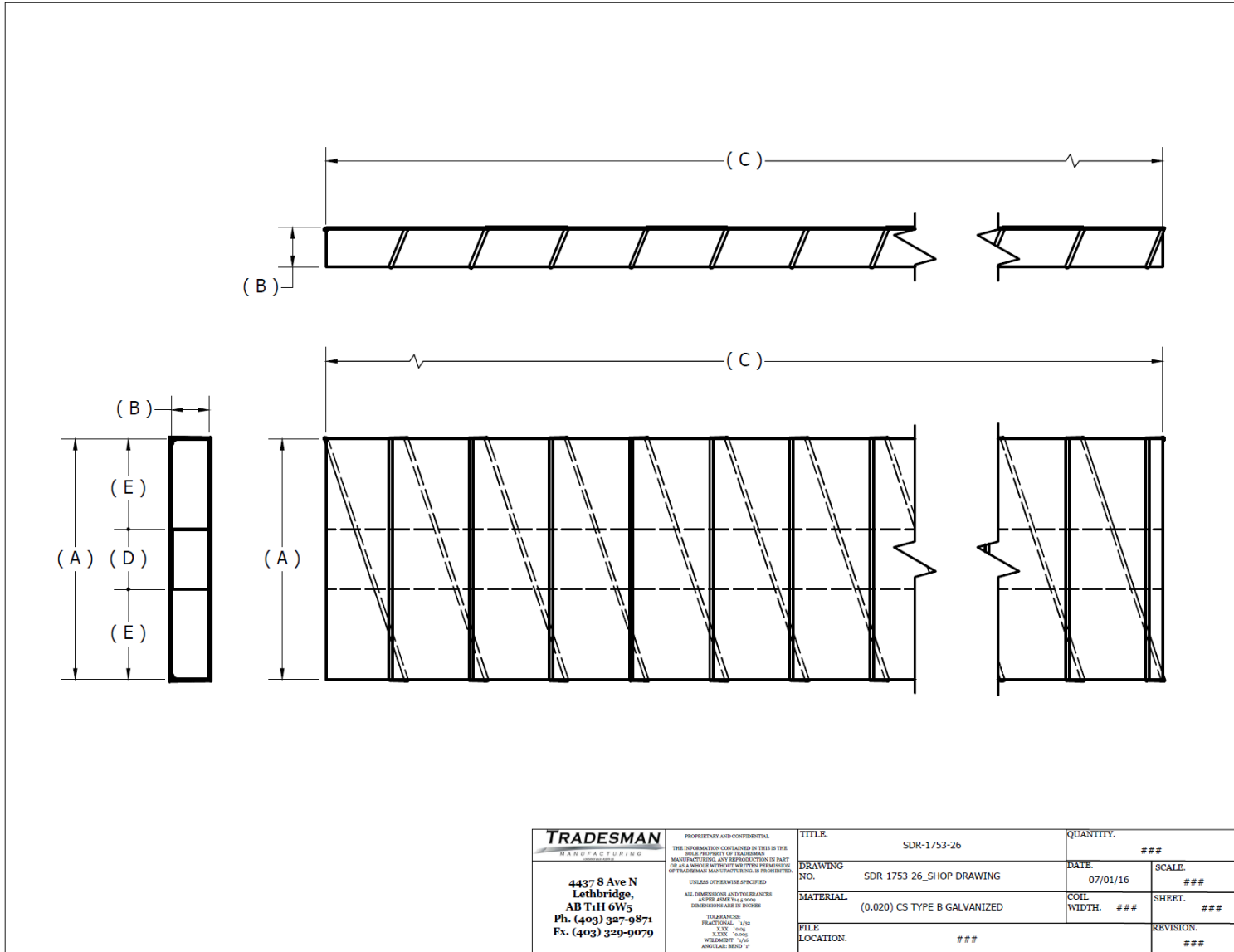
Custom sizes available upon request to suit any and all applications.

Contact Tradesman Manufacturing for availability, pricing, and lead time.

Product Code	Size (A x B)	Channel Width (D)
SDR/1753/26	12" x 1.75"	3.5"
SDR/2003/26	12" x 2"	3.5"



SLAB - DUCT



[\(403\) 327-9871](tel:4033279871)

sales@tradesmanmfg.ca

www.tradesmanmfg.ca

Specifications are subject to change without notice or obligation. All Tradesman Manufacturing products are guaranteed against defective material.