

DESCRIPTION

The Tradesman plenum is used as the first piece of duct off the top of a furnace for heating and air conditioning supply and return air systems.

CONSTRUCTION

Made of 26GA galvanized.

FEATURES

Beaded for every 12" for added strength (5' length).
 Buttonlock seam for quick assembly.
 Crossbreak for longer sizes.
 Includes end cap for top.
 Mounting flange to attach to furnace.

GUARANTEE

Made in Canada. All Tradesman Manufacturing products are guaranteed against defective material.

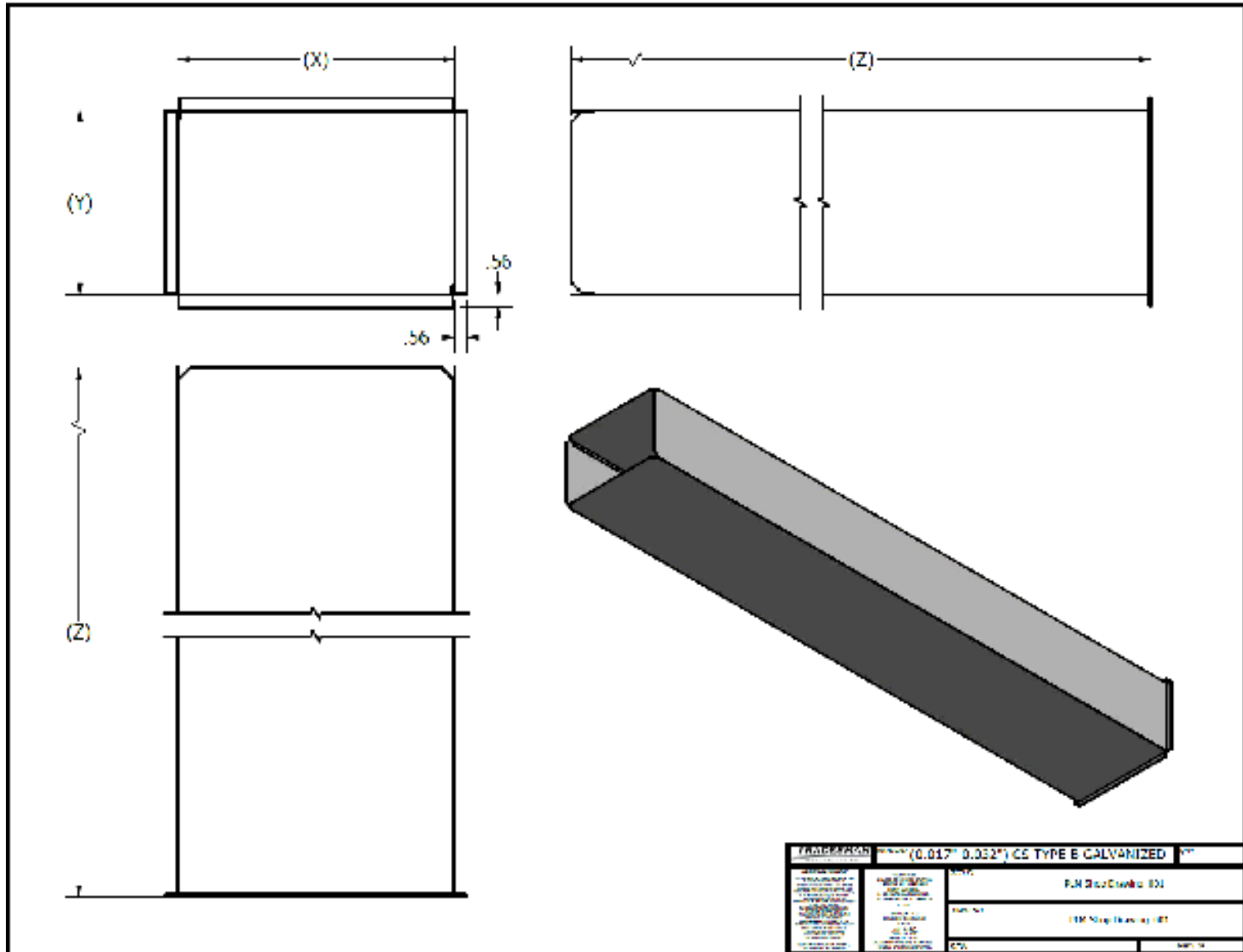
OPTIONAL CONSTRUCTION

Custom sizes and gauges available upon request to suit any and all applications.
 Optional stainless, aluminum, or satin coat.
 Four-piece construction

Contact Tradesman Manufacturing for availability, pricing, and lead time.

| Product Code | Dimension X (in) | Dimension Y (in) | Length Z (in) |
|--------------|------------------|------------------|---------------|
| PLM/1320/59 | 13.5" | 20.25" | 59" |
| PLM/1320/66 | 13.5" | 20.25" | 66" |
| PLM/1320/71 | 13.5" | 20.25" | 71" |
| PLM/1620/59 | 16.5" | 20.25" | 59" |
| PLM/1620/66 | 16.5" | 20.25" | 66" |
| PLM/1620/71 | 16.5" | 20.25" | 71" |
| PLM/2020/59 | 20" | 20.25" | 59" |
| PLM/2020/66 | 20" | 20.25" | 66" |
| PLM/2020/71 | 20" | 20.25" | 71" |
| PLM/2320/59 | 23.5" | 20.25" | 59" |
| PLM/2320/66 | 23.5" | 20.25" | 66" |
| PLM/2320/71 | 23.5" | 20.25" | 71" |

PLENUM



[\(403\) 327-9871](tel:403-327-9871)

sales@tradesmanmfg.ca

www.tradesmanmfg.ca

Specifications are subject to change without notice or obligation. All Tradesman Manufacturing products are guaranteed against defective material.