

DESCRIPTION

The Tradesman drive cleat is used to join sections of square duct.

CONSTRUCTION

Made of 24GA to 30A galvanized.

FEATURES

Made to fit any slip and drive connection.

GUARANTEE

Made in Canada. All Tradesman Manufacturing products are guaranteed against defective material.

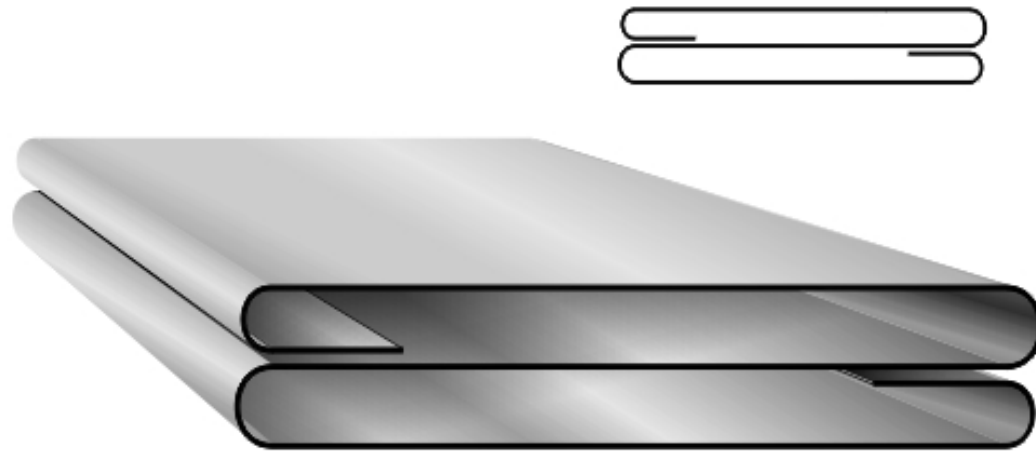
OPTIONAL CONSTRUCTION

304 Stainless Steel
316 Stainless Steel
Aluminum

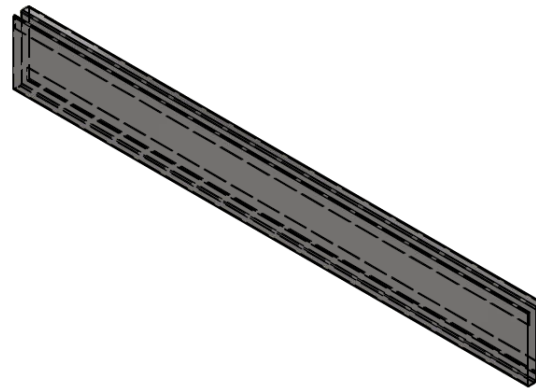
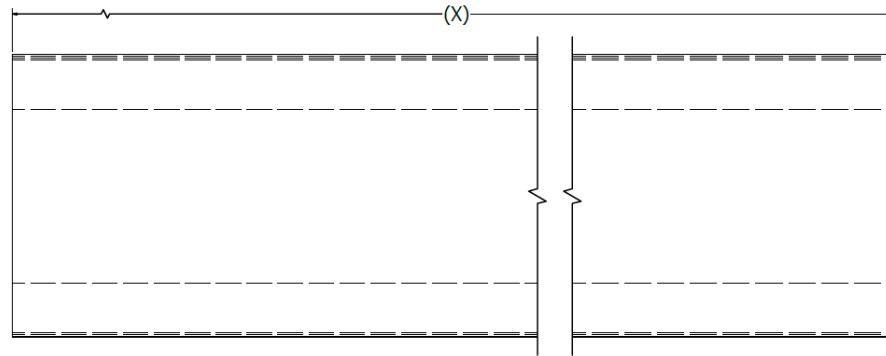
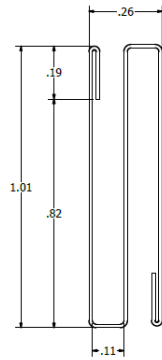
Contact Tradesman Manufacturing for availability, pricing, and lead time.

Product Code	X (in)	Gauge	Carton/Bundle/Skid Qty
SCL/0005/26	60"	26	50'/BDL, 3000'/Skid
SCL/0005/28	60"	28	50'/BDL, 3000'/Skid
SCL/0005/30	60"	30	50'/BDL, 3000'/Skid
SCL/0008/28	96"	28	80'/BDL, 4000'/Skid
SCL/0010/24	120"	24	100'/BDL, 4800'/Skid
SCL/0010/26	120"	26	100'/BDL, 4800'/Skid
SCL/0010/28	120"	28	100'/BDL, 4800'/Skid
SCL/0095/30	9.5"	30	150/CTN
SCL/0115/30	11.5"	30	150/CTN
SCL/0135/30	13.5"	30	150/CTN
SCL/0155/30	15.5"	30	150/CTN
SCL/0175/30	17.5"	30	150/CTN
SCL/0195/30	19.5"	30	150/CTN
SCL/0215/30	21.5"	30	150/CTN
SCL/0235/30	23.5"	30	150/CTN
SCL/0245/30	24.5"	30	150/CTN

CLEAT - SLIP



CLEAT - SLIP



<p>DISCREETNESS & CONFIDENTIALITY</p> <p>THIS DRAWING INCLUDES CONFIDENTIAL AND PROPRIETARY INFORMATION OF TRADESMAN MANUFACTURING AND IS TO BE USED ONLY FOR THE PROJECT AND NOT BE REPRODUCED OR TRANSMITTED IN ANY FORM, OR DISCLOSED TO ANY OTHER PARTY, WITHOUT THE WRITTEN PERMISSION FROM TRADESMAN MANUFACTURING.</p> <p>IF THIS DRAWING IS USED FOR THE PRODUCTION OF PARTS BY THE CUSTOMER AND SHALL NOT BE USED FOR ANY OTHER PURPOSE, THE CUSTOMER SHALL BE RESPONSIBLE FOR OBTAINING THE NECESSARY PERMISSION FROM TRADESMAN MANUFACTURING.</p> <p>ALL MATERIAL, INTELLECTUAL PROPERTY, AND COPYRIGHTS ARE RESERVED.</p>	NO.	DESCRIPTION	<p>TRADESMAN MANUFACTURING</p> <p>TOLERANCES (UNLESS OTHERWISE SPECIFIED) 1. REMOVE ALL BURRS AND CHIPS 2. DO NOT SCALE DRAWING 3. HANGING TOLERANCES .005" 4. HANGING TOLERANCES .010"</p> <p>ANGULAR: ±1° SMOOTHING TOLERANCE .005" HOLE: ±.005" JOG: ±.005" ANGLES: ±.031° ALLOWANCES ARE IN INCHES UNLESS OTHERWISE STATED.</p>	TITLE:	SCL-Shop Drawing.ipt	
	REVISION				DWG NO:	SCL-Shop Drawing
	MATERIAL:			QTY:	REV:	
						SHEET 1 OF 1

(403) 327-9871

sales@tradesmanmfg.ca

www.tradesmanmfg.ca

Specifications are subject to change without notice or obligation. All Tradesman Manufacturing products are guaranteed against defective material.