

INSTALLATION INSTRUCTIONS:

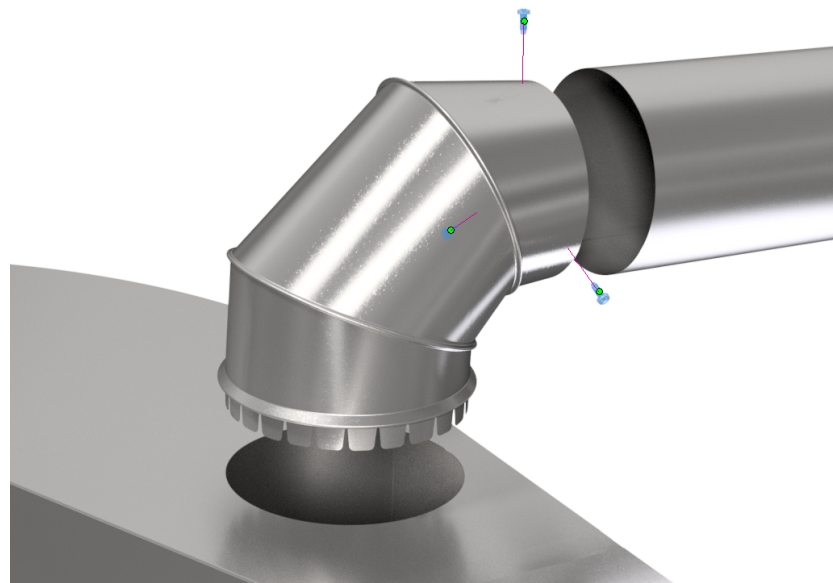
- 1- Mark and cutout ducting for take off.
- 2- Bend tabs over on the inside of ducting.
- 3- Push pipe over end of takeoff until tight.
- 4- Use three 1/2" sheet metal screws to secure other end of take off to pipe.

NOTE:

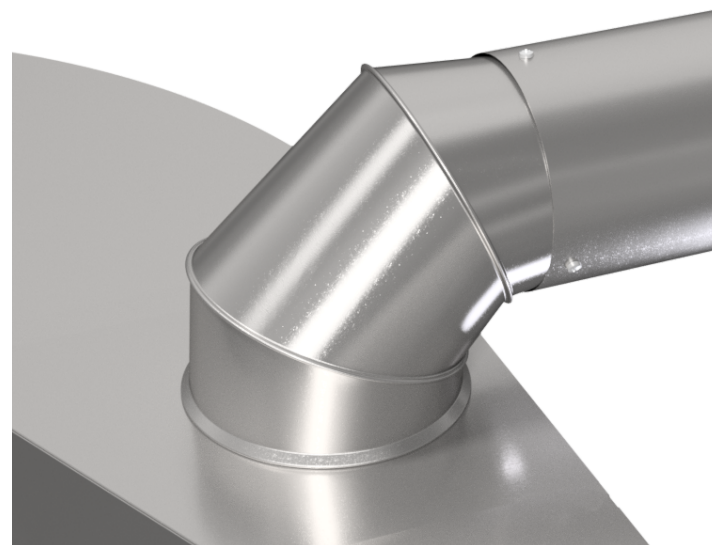
Used for residential applications. Industrial tape, foil, or sealer can be used. Make a template if doing multiple cutouts.

WARNING!!

Improper installation may result in damage to product or inefficiencies in the system. Use proper PPE and equipment during cutting, bending, and installation processes. If local codes differ from these instructions follow local building codes.



INSTALLATION VIEW



INSTALLED VIEW