



INSTALLATION INSTRUCTIONS:

1- Big end fits over small end of pipe or fitting like a cap. Small end fits inside of big end of pipe like a plug.

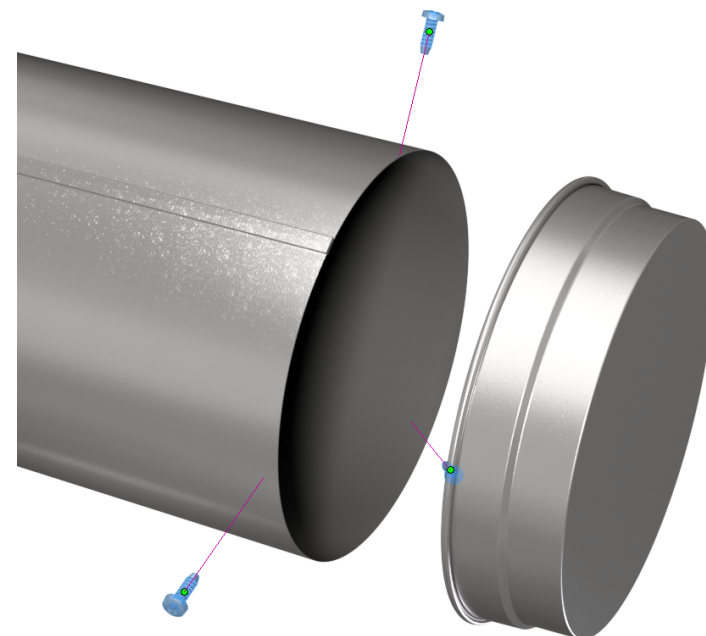
2- Push plug onto end of pipe until tight. Use three 1/2" sheet metal screws to secure into place.

NOTE:

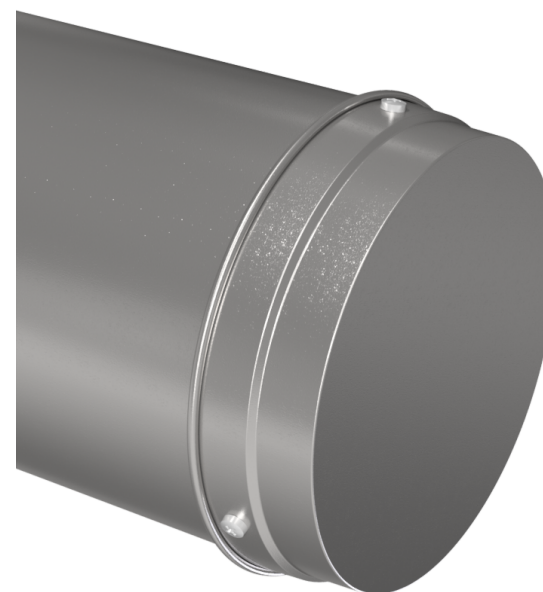
Used for Residential and Commercial applications. Industrial tape, foil, or sealer can be used.

WARNING!!

Improper installation may result in damage to product or inefficiencies in the system. Use proper PPE and equipment during cutting, bending, and installation processes. If local codes differ from these instructions follow local building codes.



INSTALLATION VIEW



INSTALLED VIEW

[\(403\) 327-9871](tel:4033279871)

sales@tradesmanmfg.ca

www.tradesmanmfg.ca

Specifications are subject to change without notice or obligation. All Tradesman Manufacturing products are guaranteed against defective material.