

INSTALLATION INSTRUCTIONS:

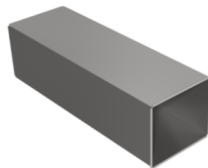
- 1- Start on one corner and push end cap onto the end of the duct and then push the other corners into place.
- 2- Hammer down the corners to secure in place. On ducts larger than 20" use a 1/2" sheet metal screw on each side.

NOTE:

Used for residential applications. Industrial tape, foil, or sealer can be used.

WARNING!!

Improper installation may result in damage to product or inefficiencies in the system. Use proper PPE and equipment during cutting, bending, and installation processes. If local codes differ from these instructions follow local building codes.



PLENUM

INSTALLATION VIEW

INSTALLED VIEW

[\(403\) 327-9871](tel:4033279871)

sales@tradesmanmfg.ca

www.tradesmanmfg.ca