

SLAB - FITTINGS - PLASTIC CHAIR SUPPORT BRACKET



INSTALLATION INSTRUCTIONS:

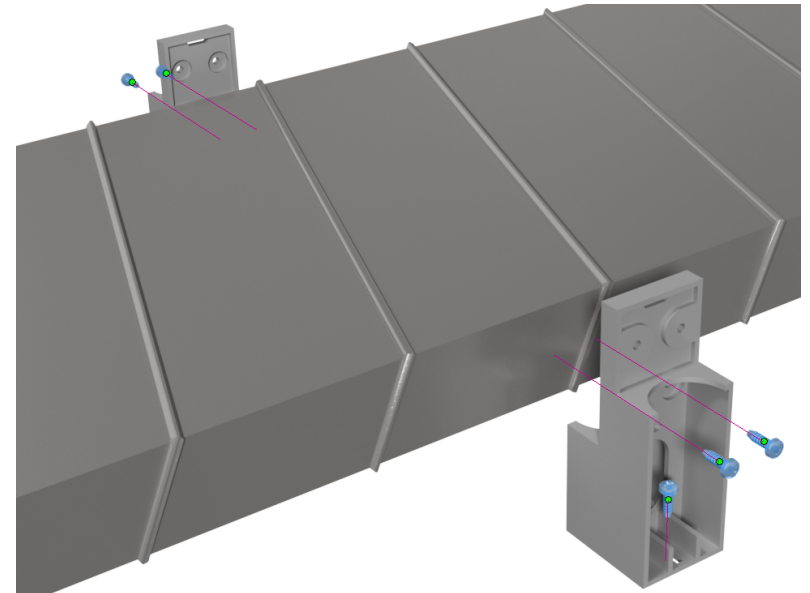
- 1- Slab duct sits on the chair and must be supported by two of them, one on each side, near every connection point.
- 2- Use two 1/2" sheet metal screws per chair to secure them to the sides of the duct.
- 3- Use one 3/4" wood screw in the bottom to secure it to the forming floor.

NOTE:

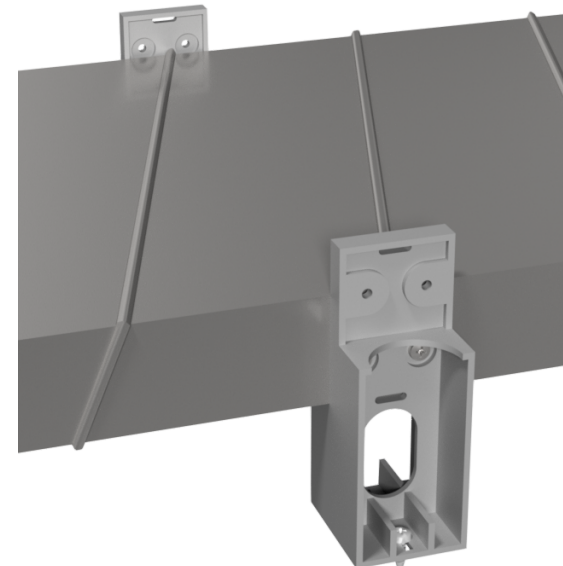
Used for commercial applications. Industrial sealer must be used.

WARNING!!

Improper installation may result in damage to product or inefficiencies in the system. Use proper PPE and equipment during cutting, bending, and installation processes. If local codes differ from these instructions follow local building codes.



INSTALLATION VIEW



INSTALLED VIEW

[\(403\) 327-9871](tel:4033279871)

sales@tradesmanmfg.ca

www.tradesmanmfg.ca

Specifications are subject to change without notice or obligation. All Tradesman Manufacturing products are guaranteed against defective material.