



INSTALLATION INSTRUCTIONS:

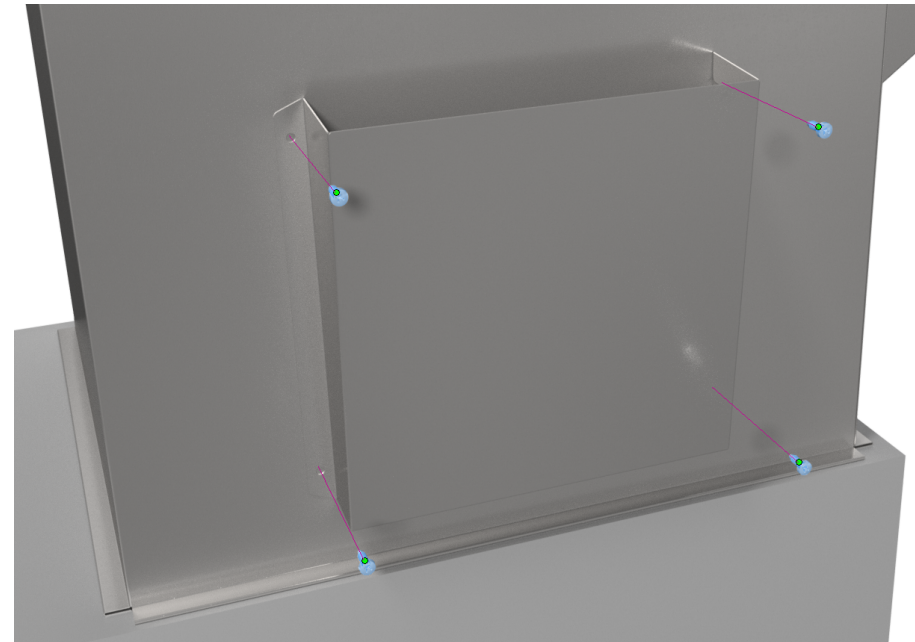
- 1- Center on plenum just above the furnace.
- 2- Use four 1/2" sheet metal screws to secure the holder in place.

NOTE:

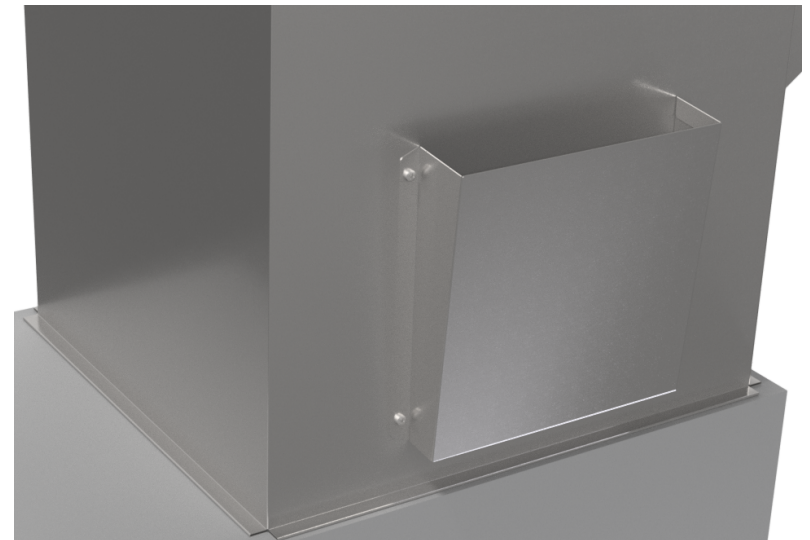
Used for residential applications. Position holder 4' - 5' off the ground.

WARNING!!

Improper installation may result in damage to product or inefficiencies in the system. Use proper PPE and equipment during cutting, bending, and installation processes. If local codes differ from these instructions follow local building codes.



INSTALLATION VIEW



INSTALLED VIEW

[\(403\) 327-9871](tel:4033279871)

sales@tradesmanmfg.ca

www.tradesmanmfg.ca

Specifications are subject to change without notice or obligation. All Tradesman Manufacturing products are guaranteed against defective material.