

HEAVY DUTY DAMPER



INSTALLATION INSTRUCTIONS:

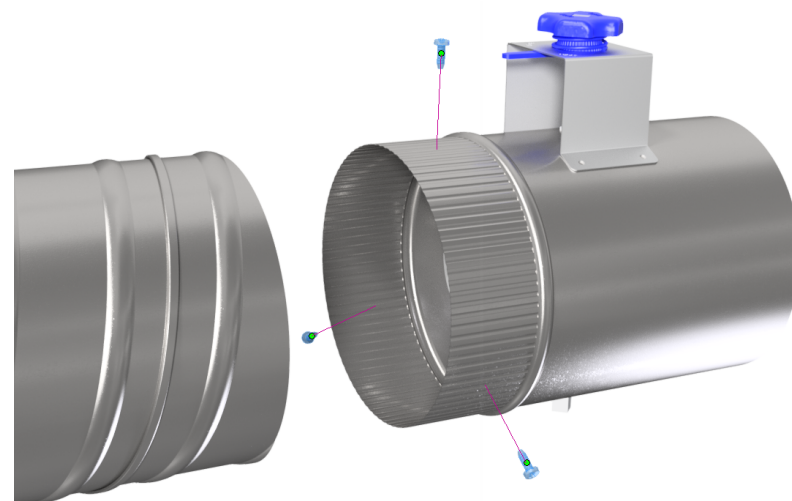
- 1- Slide crimped end into spiral pipe.
- 2- Rotate the damper into a position where the adjustable knob is easily accessible.
- 3- Use three 1/2" sheet metal screws evenly spaced to secure into place.

NOTE:

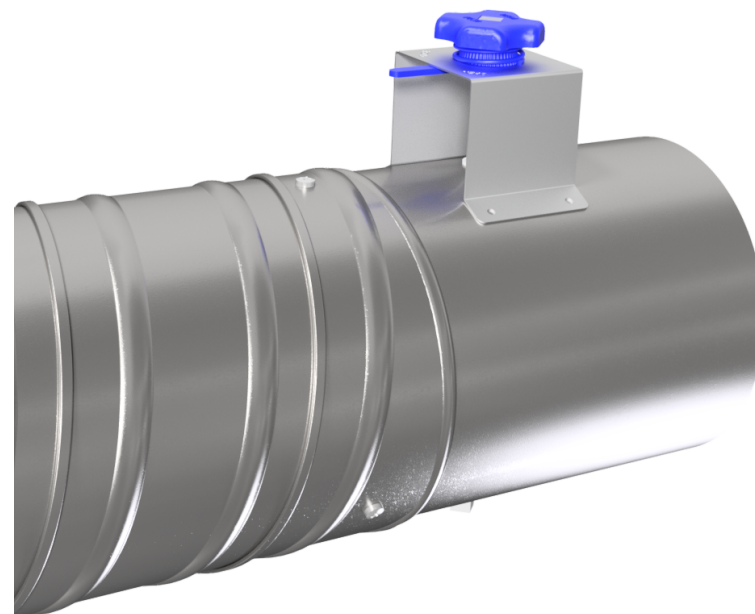
Used for commercial applications, use sealer on all connection points. Maintain small end big end air flow, keep round for damper clearance.

WARNING!!

Improper installation may result in damage to product or inefficiencies in the system. Use proper PPE and equipment during cutting, bending, and installation processes. If local codes differ from these instructions follow local building codes.



INSTALLATION VIEW



INSTALLED VIEW

[\(403\) 327-9871](tel:4033279871)

sales@tradesmanmfg.ca

www.tradesmanmfg.ca

Specifications are subject to change without notice or obligation. All Tradesman Manufacturing products are guaranteed against defective material.