

INSTALLATION INSTRUCTIONS:

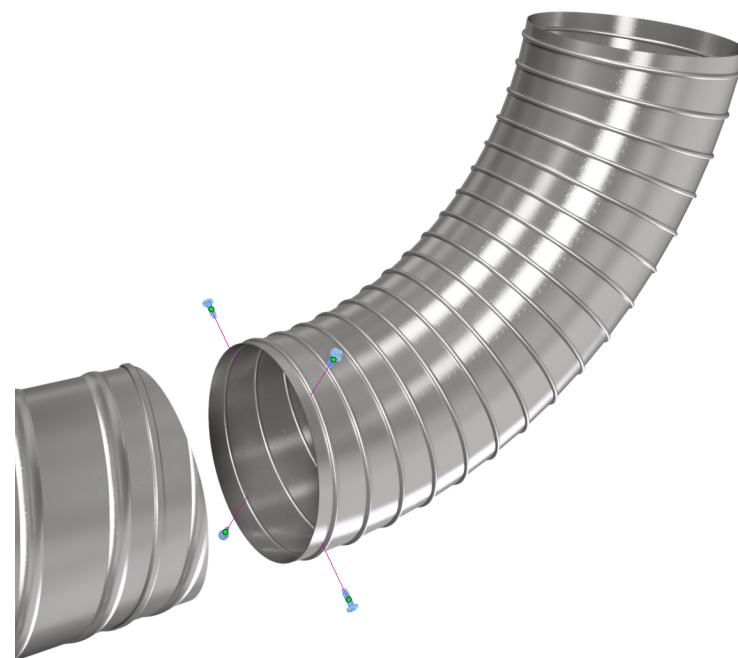
- 1- Push spiral pipe onto elbow until tight, check position rotate if needed.
- 2- Use three 1/2" sheet metal screws to secure it in place.
- 3- Use sealer for air tight connection.

NOTE:

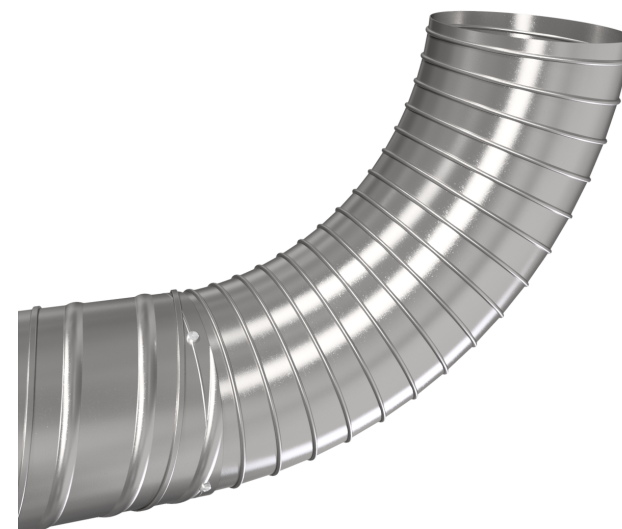
Used for Commercial applications.

WARNING!!

Improper installation may result in damage to product or inefficiencies in the system. Use proper PPE and equipment during cutting, bending, and installation processes. If local codes differ from these instructions follow local building codes.



INSTALLATION VIEW



INSTALLED VIEW

(403) 327-9871

sales@tradesmanmfg.ca

www.tradesmanmfg.ca

Specifications are subject to change without notice or obligation. All Tradesman Manufacturing products are guaranteed against defective material.