

INSTALLATION INSTRUCTIONS:

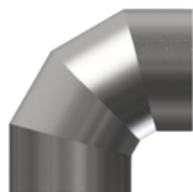
- 1- Slide elbow over crimped end on pipe until tight. Rotate elbow to desired position. Use three 1/2" sheet metal screws to secure elbow into place.
- 2- Slide boot over elbow crimped end. Use three 1/2" sheet metal screws to secure boot into place.
- 3- 90 Degree positions need a pipe support or hanging strap.

NOTE:

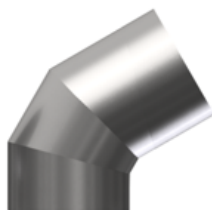
Used for residential applications. Manually rotate elbow into desired position/angle before installing.

WARNING!!

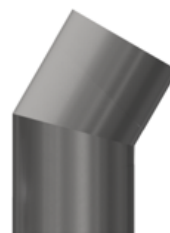
Improper installation may result in damage to product or inefficiencies in the system. Use proper PPE and equipment during cutting, bending, and installation processes. If local codes differ from these instructions follow local building codes.



90°

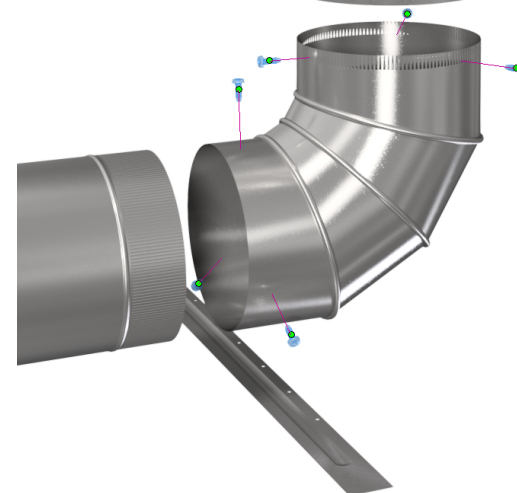


60°



30°

INSTALLATION VIEW



INSTALLED VIEW

