

## DESCRIPTION

The Tradesman tee and wye is used to branch a pipe into another pipe at 45 degrees.

## CONSTRUCTION

Made of 24GA to 28GA galvanized.

## FEATURE

Made to fit Tradesman snaplock pipe.  
Big End x Small End for optimal airflow for venting.

## GUARANTEE

Made in Canada. All Tradesman Manufacturing products are guaranteed against defective material.

## OPTIONAL CONSTRUCTION

Custom sizes available upon request to suit any and all applications.  
Optional stainless, aluminum, or satin coat.

Product Code	Body Dimension (Crimp x No Crimp) (Y)	Branch Diameter (Z)	Box Qty
WYE/0333/26	3" x 3"	3"	MTO
WYE/0433/26	4" x 3"	3"	MTO
WYE/0443/26	4" x 4"	3"	MTO
WYE/0444/26	4" x 4"	4"	26
WYE/0543/26	5" x 4"	3"	MTO
WYE/0544/26	5" x 4"	4"	12
WYE/0553/26	5" x 5"	3"	MTO
WYE/0554/26	5" x 5"	4"	12
WYE/0555/26	5" x 5"	5"	20
WYE/0644/26	6" x 4"	4"	30
WYE/0654/26	6" x 5"	4"	20
WYE/0664/26	6" x 6"	4"	24
WYE/0665/26	6" x 6"	5"	20
WYE/0666/26	6" x 6"	6"	15
WYE/0776/26	7" x 7"	6"	10

\*MTO: Made to Order

# TRADESMAN

MANUFACTURING

## TEE & WYE - WYE

Product Code	Body Dimension (Crimp x No Crimp) (Y)	Branch Diameter (Z)	Box Qty
WYE/0777/26	7" x 7"	7"	9
WYE/0886/26	8" x 8"	6"	12
WYE/0888/26	8" x 8"	8"	6
WYE/1010/26	10" x 10"	10"	4
WYE/1210/24	12" x 12"	10"	MTO
WYE/1212/24	12" x 12"	12"	MTO

\*MTO: Made to Order



[\(403\) 327-9871](tel:4033279871)

[sales@tradesmanmfg.ca](mailto:sales@tradesmanmfg.ca)

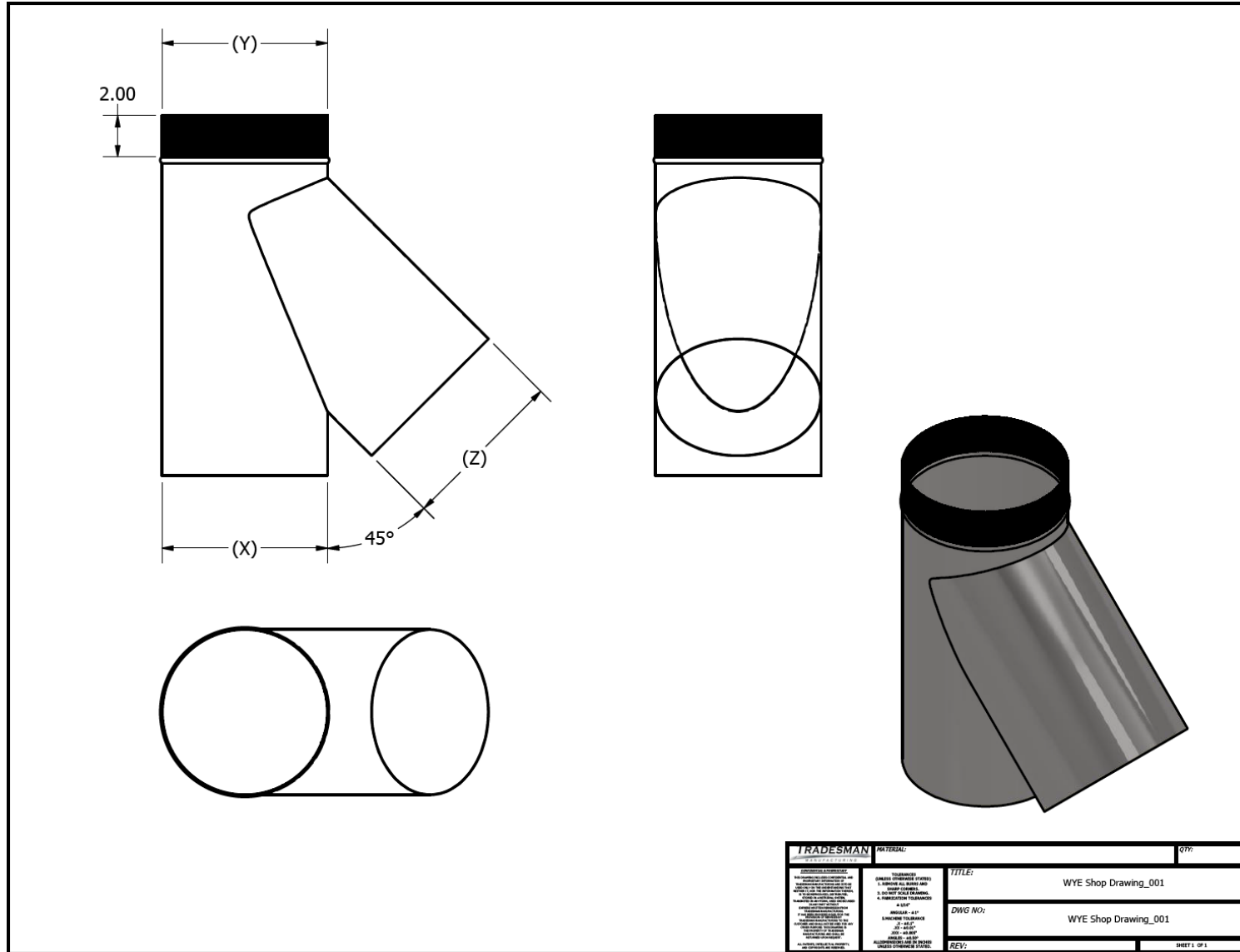
[www.tradesmanmfg.ca](http://www.tradesmanmfg.ca)

Specifications are subject to change without notice or obligation. All Tradesman Manufacturing products are guaranteed against defective material.

# TEE & WYE - WYE

# TRADESMAN

MANUFACTURING



[\(403\) 327-9871](tel:4033279871)

[sales@tradesmanmfg.ca](mailto:sales@tradesmanmfg.ca)

[www.tradesmanmfg.ca](http://www.tradesmanmfg.ca)

Specifications are subject to change without notice or obligation. All Tradesman Manufacturing products are guaranteed against defective material.