

DESCRIPTION

The Tradesman duct is used for heating and air conditioning supply and return air systems.

CONSTRUCTION

Made of 26GA to 30GA galvanized.

FEATURES

Beaded every 12" for added strength.
Buttonlock seam for quick assembly.
Stock length is 5'.

GUARANTEE

Made in Canada. All Tradesman Manufacturing products are guaranteed against defective material.

OPTIONAL CONSTRUCTION

Custom sizes and gauges available upon request to suit any and all applications.

Optional stainless, aluminum, or satin coat.
½" for drive cleat bent upon request.

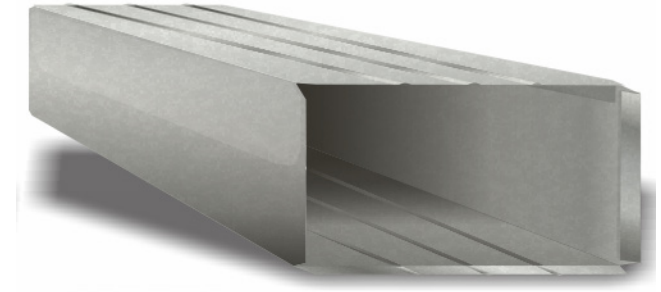
| Product Code | Dimension | Length | Skid Qty |
|---------------|-------------|--------|----------|
| DUF/0808/xxBP | 8" x 8" | 60" | 200 |
| DUF/1003/xxBP | 10" x 3" | 60" | 200 |
| DUF/1004/30NB | 10" x 4" | 60" | 200 |
| DUF/1008/xxBP | 10" x 8" | 60" | 200 |
| DUF/1010/xxBP | 10" x 10" | 60" | 200 |
| DUF/1202/30NB | 12" x 2.25" | 60" | 200 |
| DUF/1208/xxBP | 12" x 8" | 60" | 200 |
| DUF/1210/xxBP | 12" x 10" | 60" | 200 |
| DUF/1408/xxBP | 14" x 8" | 60" | 200 |
| DUF/1410/xxBP | 14" x 10" | 60" | 200 |
| DUF/1412/xxBP | 14" x 12" | 60" | 200 |
| DUF/1608/xxBP | 16" x 8" | 60" | 200 |
| DUF/1610/xxBP | 16" x 10" | 60" | 200 |
| DUF/1808/xxBP | 18" x 8" | 60" | 200 |
| DUF/1810/xxBP | 18" x 10" | 60" | 200 |
| DUF/2008/xxBP | 20" x 8" | 60" | 200 |
| DUF/2010/26BP | 20" x 10" | 60" | 200 |

TRADESMAN

MANUFACTURING

DUCT

| Product Code | Dimension | Length | Skid Qty |
|---------------|-------------|--------|----------|
| DUF/2208/26BP | 22" x 8" | 60" | 200 |
| DUF/2210/26BP | 22" x 10" | 60" | 200 |
| DUF/2408/26BP | 24" x 8" | 60" | 200 |
| DUF/2410/26BP | 24" x 10" | 60" | 200 |
| DUF/2412/26BP | 24" x 12" | 60" | 200 |
| DUF/2508/26BP | 25" x 8" | 60" | 200 |
| DUF/2509/26BP | 25" x 9.25" | 60" | 200 |
| DUF/2510/26BP | 25" x 10" | 60" | 200 |



[\(403\) 327-9871](tel:4033279871)

sales@tradesmanmfg.ca

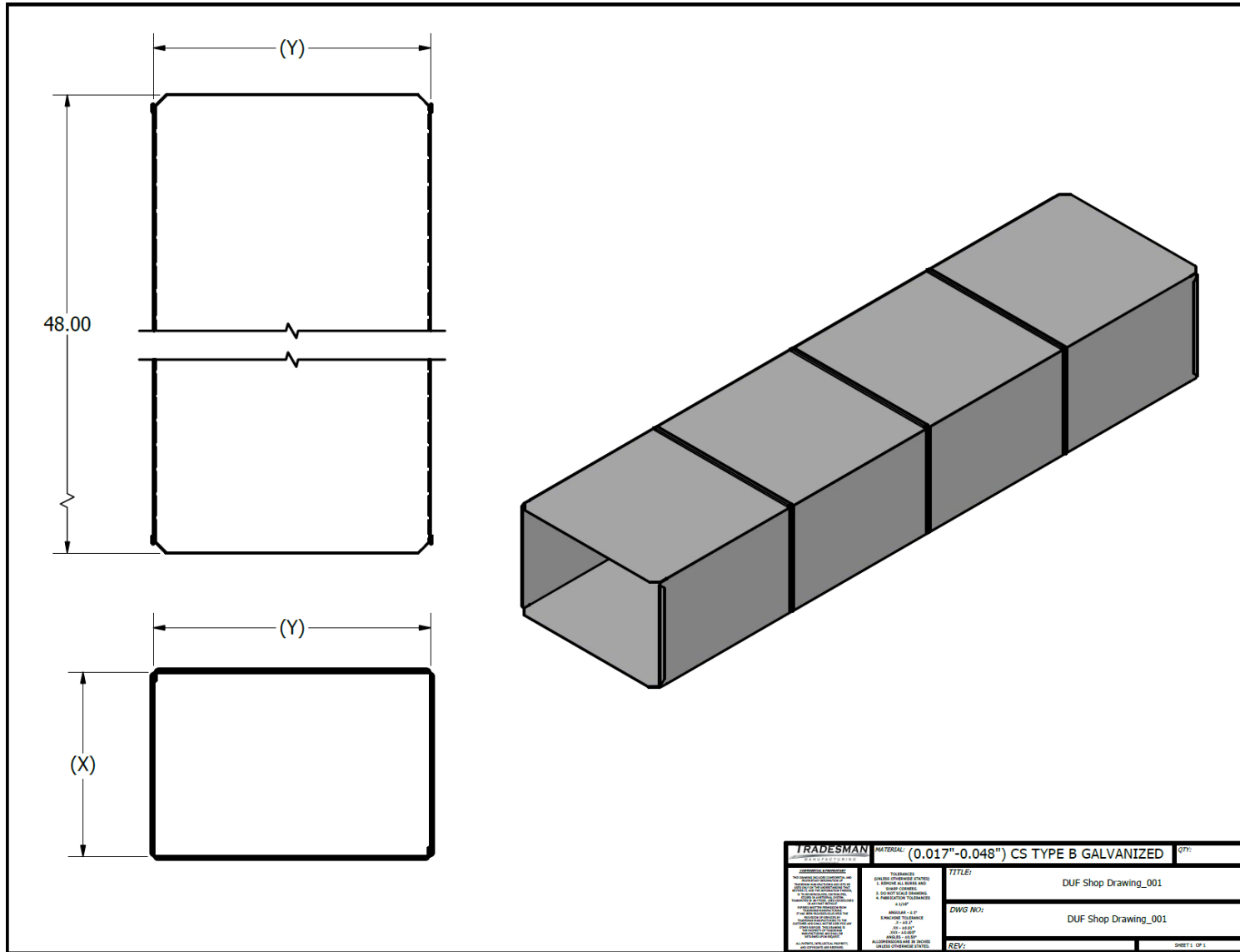
www.tradesmanmfg.ca

Specifications are subject to change without notice or obligation. All Tradesman Manufacturing products are guaranteed against defective material.

DUCT

TRADESMAN

MANUFACTURING



| | | |
|---|--|---------------------------------|
| TRADESMAN MANUFACTURING | MATERIAL: (0.017"-0.048") CS TYPE B GALVANIZED | QTY: |
| <small>GENERAL INSTRUCTIONS: 1. THE DRAWING IS THE PROPERTY OF TRADESMAN MANUFACTURING AND IS NOT TO BE REPRODUCED OR COPIED IN ANY MANNER WITHOUT THE WRITTEN PERMISSION OF TRADESMAN MANUFACTURING. 2. ALL DIMENSIONS ARE IN UNLESS OTHERWISE SPECIFIED. 3. ALL DIMENSIONS ARE TO BE TAKEN TO THE CENTERLINE UNLESS OTHERWISE SPECIFIED. 4. ALL DIMENSIONS ARE TO BE TAKEN TO THE CENTERLINE UNLESS OTHERWISE SPECIFIED. 5. ALL DIMENSIONS ARE TO BE TAKEN TO THE CENTERLINE UNLESS OTHERWISE SPECIFIED. 6. ALL DIMENSIONS ARE TO BE TAKEN TO THE CENTERLINE UNLESS OTHERWISE SPECIFIED. 7. ALL DIMENSIONS ARE TO BE TAKEN TO THE CENTERLINE UNLESS OTHERWISE SPECIFIED. 8. ALL DIMENSIONS ARE TO BE TAKEN TO THE CENTERLINE UNLESS OTHERWISE SPECIFIED. 9. ALL DIMENSIONS ARE TO BE TAKEN TO THE CENTERLINE UNLESS OTHERWISE SPECIFIED. 10. ALL DIMENSIONS ARE TO BE TAKEN TO THE CENTERLINE UNLESS OTHERWISE SPECIFIED.</small> | <small>TOLERANCES: DIMENSIONS OF UNLESS SPECIFIED ARE TO BE TO THE NEAREST 0.005" UNLESS OTHERWISE SPECIFIED & DIMENSIONS TO THE NEAREST 0.001" UNLESS OTHERWISE SPECIFIED & DIMENSIONS TO THE NEAREST 0.0005" UNLESS OTHERWISE SPECIFIED.</small> | TITLE: DUF Shop Drawing_001 |
| | | DWG No: DUF Shop Drawing_001 |
| | | REV: SHEET: 01 |

[\(403\) 327-9871](tel:4033279871)

sales@tradesmanmfg.ca

www.tradesmanmfg.ca

Specifications are subject to change without notice or obligation. All Tradesman Manufacturing products are guaranteed against defective material.